

Official Ballot

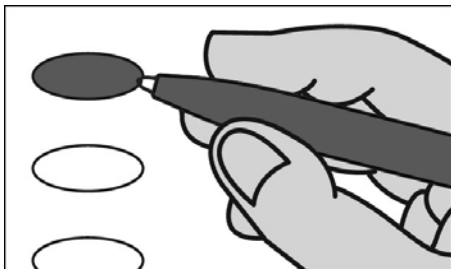
Nonpartisan Office and Referendum

April 1, 2025

S17

Notice to Voters: If you are voting on Election Day, your ballot must be initialed by two (2) election inspectors. If you are voting absentee, your ballot must be initialed by the municipal clerk or deputy clerk. Your ballot may not be counted without initials (see end of ballot for initials).

General Instructions



If you make a mistake on your ballot or have a question, ask an election inspector for help (absentee voters: Contact your municipal clerk).

To vote for a name on the ballot, fill in the oval next to the name like this: ●

To vote for a name that is not on the ballot, write the name on the line marked "write-in" and fill in the oval next to the name like this: ●

State Superintendent of Public Instruction

State Superintendent Vote for 1

- Brittany Kinser
- Jill Underly
- write-in:

Judicial

Justice of the Supreme Court Vote for 1

- Brad Schimel
- Susan Crawford
- write-in:

Court of Appeals Judge District 4 Vote for 1

- Jennifer Nashold
- write-in:

Circuit Court Judge Branch 1 Vote for 1

- Karl Hanson
- write-in:

Circuit Court Judge Branch 2 Vote for 1

- Derrick A. Grubb
- write-in:

Municipal

Town of Harmony Town Board Chairperson Vote for 1

- Jeff Klenz
- write-in:

Town of Harmony Town Board Supervisor Vote for not more than 2

- Tom Kunkel
- Matt McNall
- write-in:
- write-in:

School District

School District of Janesville School Board Member Vote for not more than 3

- Tyra Johnson
- Colton Measner
- Cory James
- Julie Richardson
- Michelle Haworth
- Veronica Hereford
- write-in:
- write-in:
- write-in:

Referendum

To vote in favor of the question, fill in the oval next to "Yes," like this: ●

To vote against the question, fill in the oval next to "No," like this: ●

State

Question 1: "Photographic identification for voting.
Shall section 1m of article III of the constitution be created to require that voters present valid photographic identification verifying their identity in order to vote in any election, subject to exceptions which may be established by law?"

- Yes
- No

Official Ballot

Nonpartisan Office and Referendum

April 1, 2025

for

Town of Harmony

School District of Janesville

Ballot issued by

Initials of election inspectors

Absentee ballot issued by

Initials of Municipal Clerk or Deputy Clerk

If issued by SVDs, both must initial.

Certification of Voter Assistance

I certify that I marked or read aloud this ballot at the request and direction of a voter who is authorized under Wis. Stat. §6.82 to receive assistance.

Signature of assistor

For Official Use Only

Inspectors: Identify ballots required to be remade:

- Overvoted
- Damaged
- Other

If this is the **Original Ballot**, write the serial number here:

If this is the **Duplicate Ballot**, write the serial number here:

Initials of inspectors who remade ballot

Continue voting at top of next column.

SAMPLE