

# Official Ballot

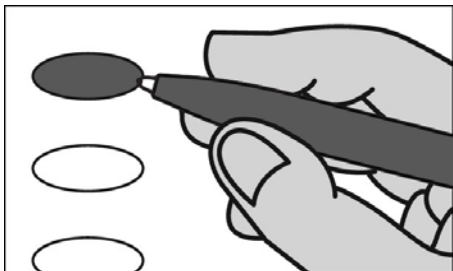
## Nonpartisan Office and Referendum

### April 4, 2023

S17

**Notice to Voters:** If you are voting on Election Day, your ballot must be initialed by two (2) election inspectors. If you are voting absentee, your ballot must be initialed by the municipal clerk or deputy clerk. Your ballot may not be counted without initials (see end of ballot for initials).

### General Instructions



If you make a mistake on your ballot or have a question, ask an election inspector for help (absentee voters: contact your municipal clerk).

To vote for a name on the ballot, fill in the oval next to the name like this: ●

To vote for a name that is not on the ballot, write the name on the line marked "write-in" and fill in the oval next to the name like this: ●

### Judicial

#### Justice of the Supreme Court Vote for 1

- Janet C. Protasiewicz
- Daniel Kelly
- write-in:

#### Court of Appeals Judge District 4 Vote for 1

- Chris Taylor
- write-in:

#### Circuit Court Judge Branch 4 Vote for 1

- Ashley Morse
- write-in:

#### Circuit Court Judge Branch 6 Vote for 1

- John M. Wood
- write-in:

### Multi-Jurisdictional Judge

#### Municipal Judge for the Towns of Milton, Harmony and Lima Vote for 1

- Mark A. Schulz
- write-in:

### Municipal

#### Town Board Chairperson Vote for 1

- Jeff Klenz
- write-in:

Continue voting at top of next column.

### Municipal (cont.)

#### Town Board Supervisor Vote for not more than 2

- Matt McNall
- Tom Kunkel
- write-in:
- write-in:

#### Town Clerk Vote for 1

- Tim Tollefson
- write-in:

### School District

#### School District of Milton School Board Member Vote for not more than 2

- Ed Snow
- Tracy Hannah
- write-in:
- write-in:

### Referendum

To vote in favor of a question, fill in the oval next to "Yes," like this: ●

To vote against a question, fill in the oval next to "No," like this: ●

### State

#### Question 1:

**"Conditions of release before conviction.** Shall section 8 (2) of article I of the constitution be amended to allow a court to impose on an accused person being released before conviction conditions that are designed to protect the community from serious harm?"

- Yes
- No

Continue voting at top of next column.

### Referendum (cont.)

To vote in favor of a question, fill in the oval next to "Yes," like this: ●

To vote against a question, fill in the oval next to "No," like this: ●

### State

#### Question 2:

**"Cash bail before conviction.** Shall section 8 (2) of article I of the constitution be amended to allow a court to impose cash bail on a person accused of a violent crime based on the totality of the circumstances, including the accused's previous convictions for a violent crime, the probability that the accused will fail to appear, the need to protect the community from serious harm and prevent witness intimidation, and potential affirmative defenses?"

- Yes
- No

### State

#### Question 3:

"Shall able-bodied, childless adults be required to look for work in order to receive taxpayer-funded welfare benefits?"

- Yes
- No

*Referendums  
continue on  
back of ballot.*

Continue voting on back of ballot.

**Referendum**

To vote in favor of a question, fill in the oval next to "Yes," like this: ●

To vote against a question, fill in the oval next to "No," like this: ○

**School District of Milton**

**Question:**

Shall the School District of Milton, Rock and Jefferson Counties, Wisconsin be authorized to exceed the revenue limit specified in Section 121.91, Wisconsin Statutes, by \$4,000,000 for the 2023-2024 school year; by an additional \$1,000,000 (for a total of \$5,000,000) for the 2024-2025 school year; by an additional \$1,000,000 (for a total of \$6,000,000) for the 2025-2026 school year; and by an additional \$3,500,000 for the 2026-2027 school year (for a total of \$9,500,000 and to remain at this amount), for recurring purposes consisting of ongoing educational programming, staffing and maintenance expenses?

Yes

No

**Official Ballot**

**Nonpartisan Office  
and Referendum**

**April 4, 2023**

for

**Town of Harmony**

**School  
District of  
Milton**

**Ballot issued by**

\_\_\_\_\_

\_\_\_\_\_

Initials of election inspectors

**Absentee ballot issued by**

\_\_\_\_\_

\_\_\_\_\_

If issued by SVDs, both must initial.

**Certification of Voter Assistance**

I certify that I marked or read aloud this ballot at the request and direction of a voter who is authorized under Wis. Stat. §6.82 to receive assistance.

\_\_\_\_\_

Signature of assistor

**For Official Use Only**

**Inspectors:** Identify ballots required to be remade:

Overvoted

Damaged

Other

If this is the **Original Ballot**, write serial number here:

\_\_\_\_\_

If this is the **Duplicate Ballot**, write serial number here:

\_\_\_\_\_

\_\_\_\_\_

Initials of inspectors who remade ballot

