

# Official Ballot

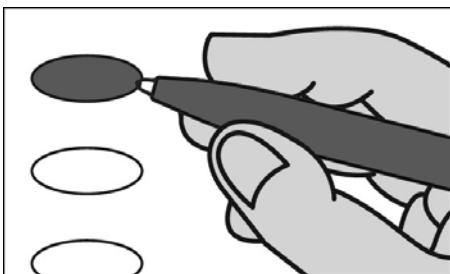
## Nonpartisan Office and Referendum

### April 6, 2021

S16

**Notice to Voters:** If you are voting on Election Day, your ballot must be initialed by two (2) election inspectors. If you are voting absentee, your ballot must be initialed by the municipal clerk or deputy clerk. Your ballot may not be counted without initials. (See right column of ballot for initials.)

### General Instructions



If you make a mistake on your ballot or have a question, ask an election inspector for help. (Absentee voters: Contact your municipal clerk.)

To vote for a name on the ballot, fill in the oval next to the name like this: ●

To vote for a name that is not on the ballot, write the name on the line marked "write-in" and fill in the oval next to the name like this: ●

### State Superintendent of Public Instruction

#### State Superintendent Vote for 1

- Jill Underly
- Deborah Kerr
- write-in

### Judicial

#### Rock County Circuit Court Judge Branch 5 Vote for 1

- Mike Haakenson
- write-in

### Municipal

#### Town Board Chairperson Vote for 1

- Jeff Klenz
- write-in

#### Town Board Supervisor Vote for not more than 2

- Jerry Larson
- Matt McNall
- write-in
- write-in

#### Town Clerk Vote for 1

- Tim Tollefson
- write-in

Continue voting at top of next column.

### School District

#### School District of Janesville School Board Member Vote for not more than 3

- Elizabeth Paull
- John E. Hanewall
- Jessica Davis
- Greg Ardrey
- Cathy Burt
- Curt Parish
- write-in
- write-in
- write-in

### Referendum

To vote in favor of a question, fill in the oval next to "Yes," like this: ●

To vote against a question, fill in the oval next to "No," like this: ●

### Rock County

Question: Should the State of Wisconsin accept Affordable Care Act Federal Medicaid funds earmarked to expand health insurance coverage to 176,000 additional Wisconsin residents resulting in the state saving \$324.5 million?

- Yes
- No

### Official Ballot

#### Nonpartisan Office and Referendum

April 6, 2021

for

## Town of Harmony

## Janesville School District

Ballot issued by

\_\_\_\_\_  
Initials of election inspectors

Absentee ballot issued by

\_\_\_\_\_  
Initials of Municipal Clerk or Deputy Clerk

If issued by SVDs, both SVDs must initial.

### Certification of Voter Assistance

I certify that I marked or read aloud this ballot at the request and direction of a voter who is authorized under Wis. Stat. §6.82 to receive assistance.

\_\_\_\_\_  
Signature of assistor

### For Official Use Only

**Inspectors:** Identify ballots required to be remade:

- Overvoted
- Damaged
- Other

If this is the **Original Ballot**, write serial number here:

\_\_\_\_\_

If this is the **Duplicate Ballot**, write serial number here:

\_\_\_\_\_

\_\_\_\_\_  
Initials of inspectors who remade ballot