

# Official Primary Ballot

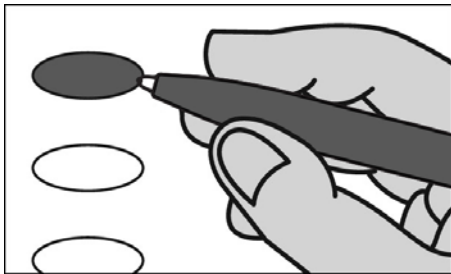
## Partisan Office and Referendum

### August 11, 2020

S7

**Notice to Voters:** If you are voting on Election Day, your ballot must be initialed by two (2) election inspectors. If you are voting absentee, your ballot must be initialed by the municipal clerk or deputy clerk. Your ballot may not be counted without initials. (See end of ballot for initials.)

### General Instructions



If you make a mistake on your ballot or have a question, ask a poll worker for help. (Absentee voters: Contact your municipal clerk.)

To vote for a name on the ballot, fill in the oval next to the name like this: ●.

To vote for a name that is not on the ballot, write the name on the line marked "write-in," and fill in the oval next to the name like this: ●.

### Special Instructions for Voting in a Partisan Primary

**In the Partisan Primary:**

- You may vote in only ONE party's primary.
- If you choose a party, votes cast in that party will be counted. Votes cast in any other party will not be counted.
- If you do not choose a party, and you vote in more than one party, no votes will be counted.

**You must vote for individual candidates.**

### Party Preference Section

**Choose a party in which to vote.**

Fill in the oval next to your party choice, like this: ●. **Choose only ONE.**

- Democratic
- Republican
- Constitution

### Democratic Party Primary

*If you vote in this party's primary, you may not vote in any other party's primary.*

#### Congressional

**Representative in Congress  
District 2  
Vote for 1**

- Mark Pocan
- write-in

#### Legislative and State

**Representative to the Assembly  
District 31  
Vote for 1**

- Elizabeth Lochner-Abel
- write-in

**District Attorney  
Vote for 1**

- David J. O'Leary
- write-in

#### County

**County Clerk  
Vote for 1**

- Yuri Rashkin
- Lisa Tollefson
- write-in

**County Treasurer  
Vote for 1**

- Michelle L. Roettger
- write-in

**Register of Deeds  
Vote for 1**

- Sandy Disrud
- write-in

**End Democratic Party Primary**

### Republican Party Primary

*If you vote in this party's primary, you may not vote in any other party's primary.*

#### Congressional

**Representative in Congress  
District 2  
Vote for 1**

- Peter Theron
- write-in

#### Legislative and State

**Representative to the Assembly  
District 31  
Vote for 1**

- Amy Loudbeck
- write-in

**District Attorney  
Vote for 1**

- write-in

#### County

**County Clerk  
Vote for 1**

- write-in

**County Treasurer  
Vote for 1**

- write-in

**Register of Deeds  
Vote for 1**

- write-in

**End Republican Party Primary**

SAMPLE

Turn ballot  
over for  
referendum.

Democratic Primary begins at top of next column.

Republican Primary begins at top of next column.

Constitution Primary begins on the other side of ballot.

**Constitution Party Primary**

*If you vote in this party's primary, you may not vote in any other party's primary.*

**Congressional**

**Representative in Congress  
District 2  
Vote for 1**

write-in

**Legislative and State**

**Representative to the Assembly  
District 31  
Vote for 1**

write-in

**District Attorney  
Vote for 1**

write-in

**County**

**County Clerk  
Vote for 1**


write-in

**County Treasurer  
Vote for 1**

write-in

**Register of Deeds  
Vote for 1**

write-in

 **End Constitution Party Primary**

**Referendum**

To vote in favor of a question, fill in the oval next to "Yes," like this: ●

To vote against a question, fill in the oval next to "No," like this: ○

**Town of Harmony**

Question: Shall the person holding the office of Town Treasurer in the Town of Harmony be appointed by the Town Board?

Yes

No

**Official Primary Ballot  
Partisan Office and Referendum**

**August 11, 2020**  
for  
**T. Harmony W1**

**Ballot issued by**  
\_\_\_\_\_  
\_\_\_\_\_  
Initials of election inspectors

**Absentee ballot issued by**  
\_\_\_\_\_  
\_\_\_\_\_  
Initials of municipal clerk or deputy clerk  
If issued by SVDs, both SVDs must initial.

**Certification of Voter Assistance**  
I certify that I marked or read aloud this ballot at the request and direction of a voter who is authorized under Wis. Stat. § 6.82 to receive assistance.  
\_\_\_\_\_  
Signature of assistor

**For Official Use Only**

**Inspectors:** Identify ballots required to be remade.  
**Reason for remaking ballot:**  
 Overvoted  
 Damaged  
 Other

If this is the **Original Ballot**, write serial number here: \_\_\_\_\_  
If this is the **Duplicate Ballot**, write serial number here: \_\_\_\_\_

\_\_\_\_\_  
Initials of inspectors who remade ballot

SAMPLE