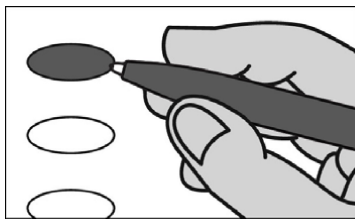


Official Ballot
Presidential Preference Vote
Nonpartisan Office and Referendum
April 7, 2020

S22

Notice to Voters: If you are voting on Election Day, your ballot must be initiated by 2 election inspectors. If you are voting absentee, your ballot must be initiated by the municipal clerk or deputy clerk. Your ballot may not be counted without initials. (See end of ballot for initials.)

General Instructions



If you make a mistake on your ballot or have a question, ask an election inspector for help. (Absentee voters: Contact your municipal clerk.)

To vote for a name on the ballot, fill in the oval next to the name like this ●.

To vote for a name that is not on the ballot, write the name on the line marked "write-in," and fill in the oval next to the line like this ●.

Special Instructions for Presidential Preference Vote

In the Presidential Preference Vote

- You may vote for only one candidate.
- You may vote in only ONE party.
- If you vote more than once, your vote will not be counted.

Choose the party in which you will vote. Within the party you have chosen, you have ONE of 3 choices:

1. Vote for a candidate whose name is printed on this ballot in the party you have chosen.
2. Vote for an uninstructed delegation from Wisconsin to the national convention of the party you have chosen.
3. Write in the name of another person to become the presidential candidate of the party you have chosen.

Fill in ONE oval in ONE party.

Presidential Preference Vote

Choose a party in which to vote. Fill in the oval next to your party choice, like this: ●. **Choose only 1.**

- Democratic
- Republican

Democratic Party

If you vote in this party, you may not vote in the other party.

**President of the United States
Vote for 1**

- Tulsi Gabbard
- Amy Klobuchar
- John Delaney
- Deval Patrick
- Bernie Sanders
- Andrew Yang
- Pete Buttigieg
- Tom Steyer
- Elizabeth Warren
- Michael Bennet
- Michael R. Bloomberg
- Joe Biden
- Uninstructed Delegation
- write-in:

Republican Party

If you vote in this party, you may not vote in the other party.

**President of the United States
Vote for 1**

- Donald J. Trump
- Uninstructed Delegation
- write-in:

End Presidential Preference Vote

SAMPLE

Nonpartisan offices begin at top of next column.

Judicial

**Justice of the Supreme Court
Vote for 1**

- Jill J. Karofsky
- Daniel Kelly
- Write-in

**Court of Appeals Judge
District 4
Vote for 1**

- Rachel A. Graham
- Write-in

County

**County Board Supervisor
District 20
Vote for 1**

- Wes Davis
- John Smecko
- write-in:

Municipal

**Town of Harmony
Town Board Supervisor
Vote for not more than 2**

- Bill Schrank
- William G. Barlass
- Write-in
- Write-in

School District

**School District of Milton
School Board Member
Vote for not more than 2**

- David Holterman
- Shelly Crull-Hanke
- Karen Hall
- Mike Hoffman
- Write-in
- Write-in

*Turn ballot
over for
referendums.*

Continue voting on other side of ballot.

Presidential Preference Vote begins at top of next column.

Referendum

To vote in favor of a question, fill in the oval next to "Yes," like this: ●.

To vote against a question, fill in the oval next to "No," like this: ○.

State

Question: Additional rights of crime victims. Shall section 9m of article I of the constitution, which gives certain rights to crime victims, be amended to give crime victims additional rights, to require that the rights of crime victims be protected with equal force to the protections afforded the accused while leaving the federal constitutional rights of the accused intact, and to allow crime victims to enforce their rights in courts?

Yes

No

Rock County

Question: Should the Wisconsin Legislature create a nonpartisan procedure for the preparation of legislative and congressional district plans and maps?

Yes

No

SAMPLE

Official Ballot

**Presidential Preference Vote
Nonpartisan Office
and Referendum**

April 7, 2020

for

T. Harmony W2-6 W3&4
Milton School

Ballot issued by

Initials of election inspectors

Absentee ballot issued by

If issued by SVDs, both SVDs must initial.

Certification of Voter Assistance

I certify that I marked or read aloud this ballot at the request and direction of a voter who is authorized under Wis. Stat. § 6.82 to receive assistance.

Signature of assistor

For Official Use Only

Inspectors: *Identify ballots required to be remade.*

Reason for remaking ballot:

- Overvoted
- Damaged
- Other

If this is the **original ballot** —

Write serial number here:

If this is the **duplicate ballot** —

Write serial number here:

Initials of inspectors who remade ballot